

Addendum for installation of Kenwood KNA-G510 Navigation

The number one mistake made on the installation of the Kenwood KNA-G510 Navigation system is very simple to avoid. In an effort to supply our customers with the best possible product support and avoid the frustration of having to return a unit that turns out to be functional, we have made this addendum available.

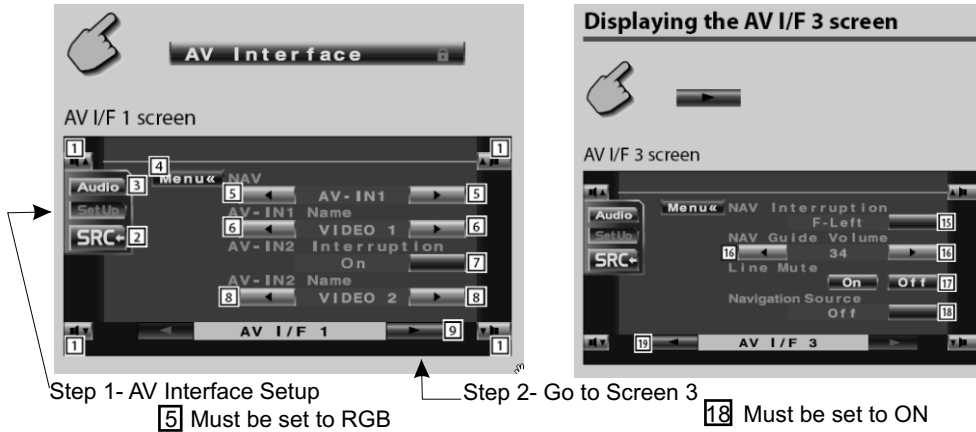
Please follow these simple steps in order for your new navigation module to be recognized by the head unit.

THE HEAD UNIT WILL NOT RECOGNIZE THE NAVIGATION MODULE UNTIL IT IS PROPERLY SETUP.

Models DDX-6019, DDX-7017, DDX-8017, KVT-617DVD, KVT-717DVD, KVT-817DVD (2 Steps)

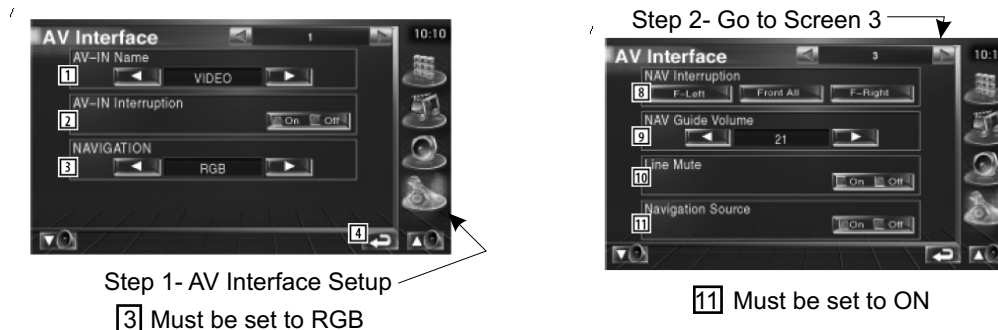
Models DDX-7015, DDX-6017, KVT-815DVD, KVT-715DVD (Only First Step)

Your screen may look a little different, but the process and location of the buttons are the same.

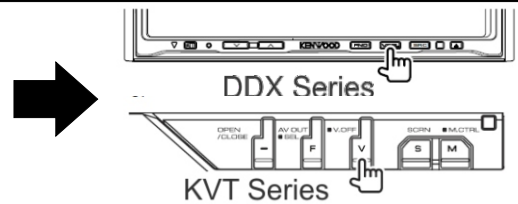


Models DDX-7019, DDX-8019, KVT-719DVD, KVT-819DVD (2 Steps)

Your screen may look a little different, but the process and location of the buttons are the same.

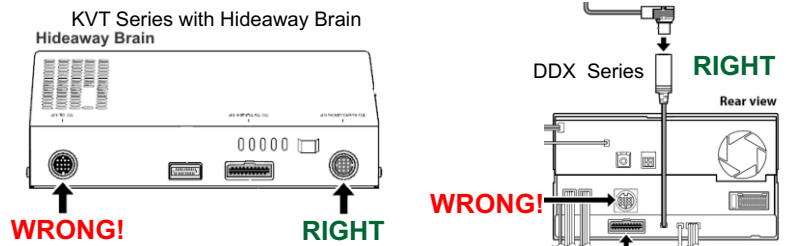


After the settings above, you must cycle (press several times) the VIDEO Source button (V.SEL or V button). As the screens change, you will be able to view the navigation screen.



Are you plugged in correctly?

Make sure you plug the 13-PIN round connector to the RED socket on the unit, DO NOT CONNECT IT TO THE BLACK SOCKET!



Antenna location is important!

- ✍ Please make sure your antenna is attached to a metal surface.
- ✍ If installing your antenna on the dash, please make sure you use the metal base that comes with your package.
- ✍ Make sure that the antenna has a clear view to the sky, GPS signals can go through glass but not metal.
- ✍ Please follow all directions as specified on the manual.